

TechNote



SETTING UP A CLIENT SERVER NETWORK

Title	Setting up a client server network
Category	Network
Document Number	V2TN003
Create Date	05/11/07
Revision Date	16/11/07
Document Version	Final
Author	Selemela Khoele
Support	support@ccssa.com

It is possible to run the Candy System in a Peer-to-Peer or Client Server network environment. This document briefly outlines the requirements for a Client Server network and is intended for a network administrator with a working knowledge of configuring networks.

The recommended installation method is to retain the Candy system on each user's local computer and to provide access to all the network facilities. Following this approach allows users to continue working even when the server is out of operation. The users must develop a culture of backing up to the archive area on the server to avoid data loss.

SETTING UP THE SERVER COMPUTER

The Server computer is the computer on which the Candy Common Data Areas will reside. The following steps ensure that the Server computer is able to share the Common Data Areas with other computers on the network.

Create and share the folder CCSAPPS on the server (Server)

On the server create the folder CCSAPPS. This folder must then be shared with full read / write access to all Candy users on the network.

Create the Common Data Areas (Server)

Create the folders:

```
\CCSAPPS\CCSCOM
\CCSAPPS\CCSMAST
\CCSAPPS\CCSMULTI
```

in the CCSAPPS folder.

Create the user's home drive (Server)

In each user's home drive create the folder CCSDATA. This is the folder in which archive backups will be stored. For the purpose of this document, it will be assumed that the user's home drive is H.

SETTING UP THE CLIENT COMPUTERS (WORKSTATIONS)

The following steps are required to ensure that the Candy System will operate on the client computers (workstations). These steps need to be completed on all workstations that require the Candy Network facilities.

Map the network drives

(Workstation)

Create a drive mapping to CCSAPPS on the Server computer. For the purpose of this TechNote, drive X will be assumed.

Install the Candy System

(Workstation)

Install the Candy System into the folder C:\Program Files\CCSWIN on each user's computer (Refer to TechNote V2TN001).

Set up the Common, Masters and Multi-User areas

(Workstation)

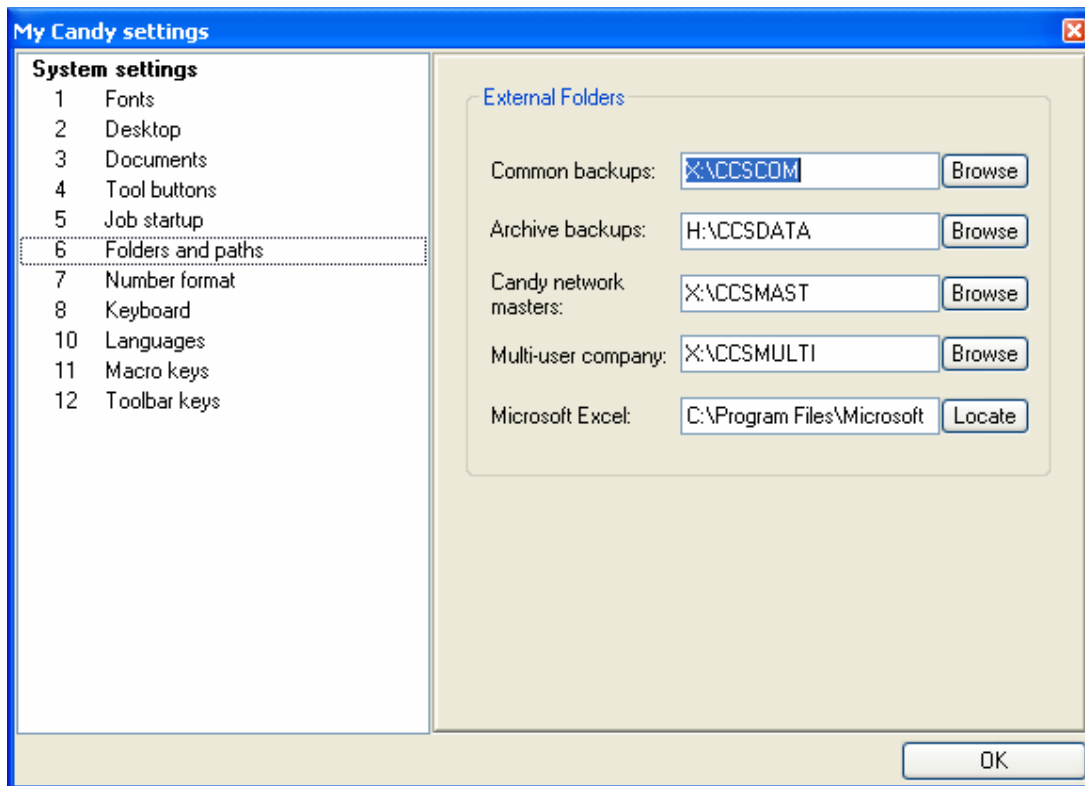
Load the Candy System and change the Common backups, Candy Network Masters and Multi-User company paths read X:\CCSCOM, X:\CCSMAST and X:\CCSMULTI. Change the Archive backup folder to H:\CCSDATA.

Load the Candy System

Click on the My Candy Settings button.



Select **Folders and paths**



Change the Common Backups field to read **X:\CCSCOM**.

Change the Archive Backups field to read **H:\CCSDATA**.

Change the Candy network masters tab to read **X:\CCSMAST**.

Change the Multi-user company field to read **X:\CCSMULTI**.

Click on the **OK** button.