

CONFIGURING CCS TO RUN PORTUGUESE

| | |
|------------------|-----------------------------------|
| Title | Configuring CCS to run Portuguese |
| Category | SETUP |
| Document Number | TN0006 |
| Software version | All versions |
| Application | SYSTEM |
| Create Date | 15 July 2003 |
| Revision Date | 21 July 2003 |
| Document Version | Final |
| Author | Dale Anderson |
| Support | support@ccssa.com |

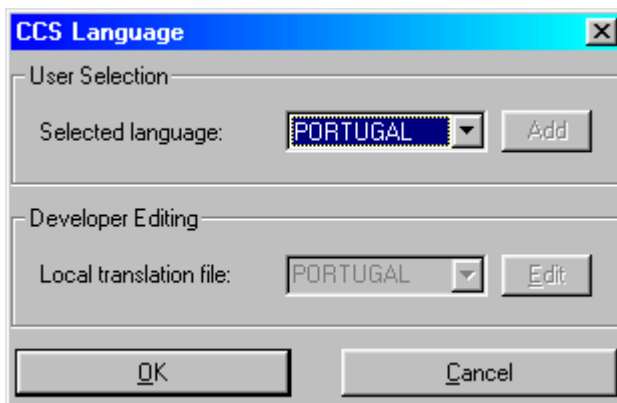
The following TechNote explains how to install the Portuguese language file in CCS.

CONFIGURE CCS TO USE THE LANGUAGE FILE

- Copy the File PORTUGAL.GNL to C:\CCSWIN\GLOBAL.
- Load the CCS System.
- From the CCS main menu, go to the:

Utilities Menu
Tools Menu
Language Selection


- Change the selected language to Portugal.

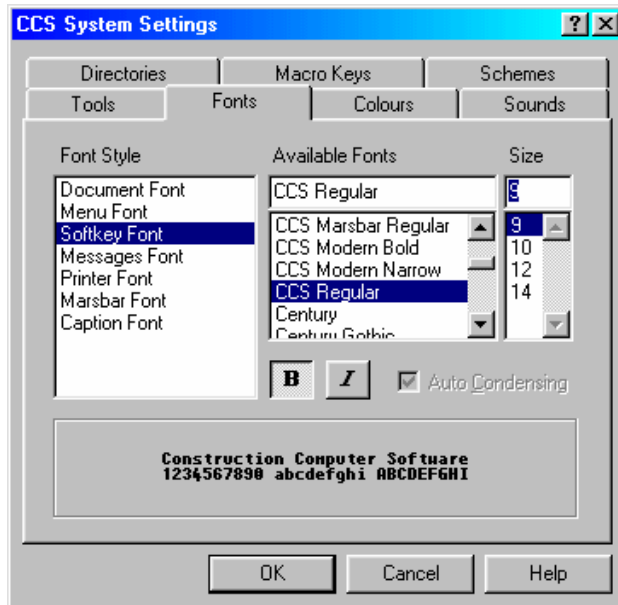


- Click on **OK**.

CHANGE THE CCS FONTS

To work with Documents and SoftKeys, the only Font acceptable is CCS Regular, because it is the only one that accepts Portuguese characters.

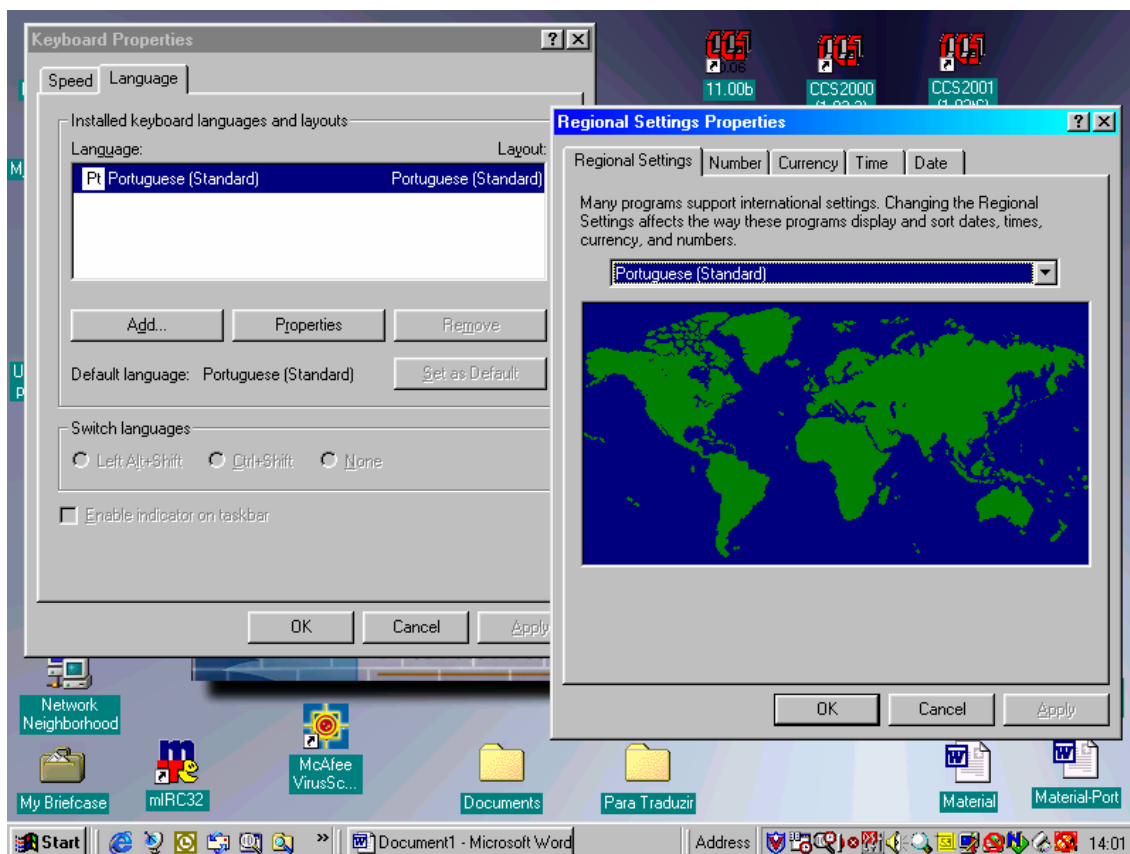
- Click on the **Configure** toolbar button. This is depicted by a hammer .
- Click on the **Fonts** tab.
- Change the Document, Menu and SoftKey fonts to CCS Regular.



CHANGE THE WINDOWS REGIONAL SETTINGS

The Keyboard and the Regional Settings must to be configured with "Portuguese Standard" option.

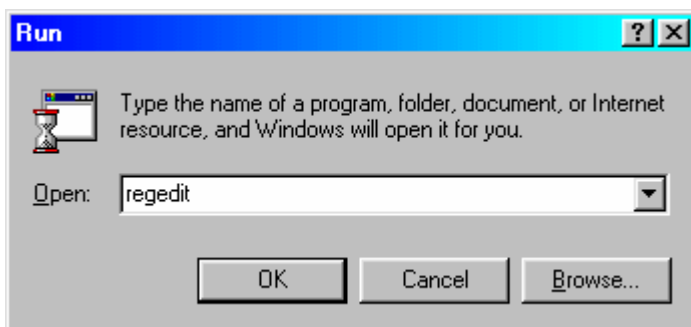
- Click on the Windows **Start** button.
- Click on **Settings**.
- Click on **Control Panel**.
- Double click on the **Keyboard** shortcut.
- Click on the **Language** Tab.
- Click on **Add** and add the Portuguese (Standard) language.
- Set the Portuguese language to be the default.
- Click on **OK**.
- Double click on the **Regional Shortcut**.
- Change the **Regional Settings** to Portuguese (Standard).
- Click on **OK**.



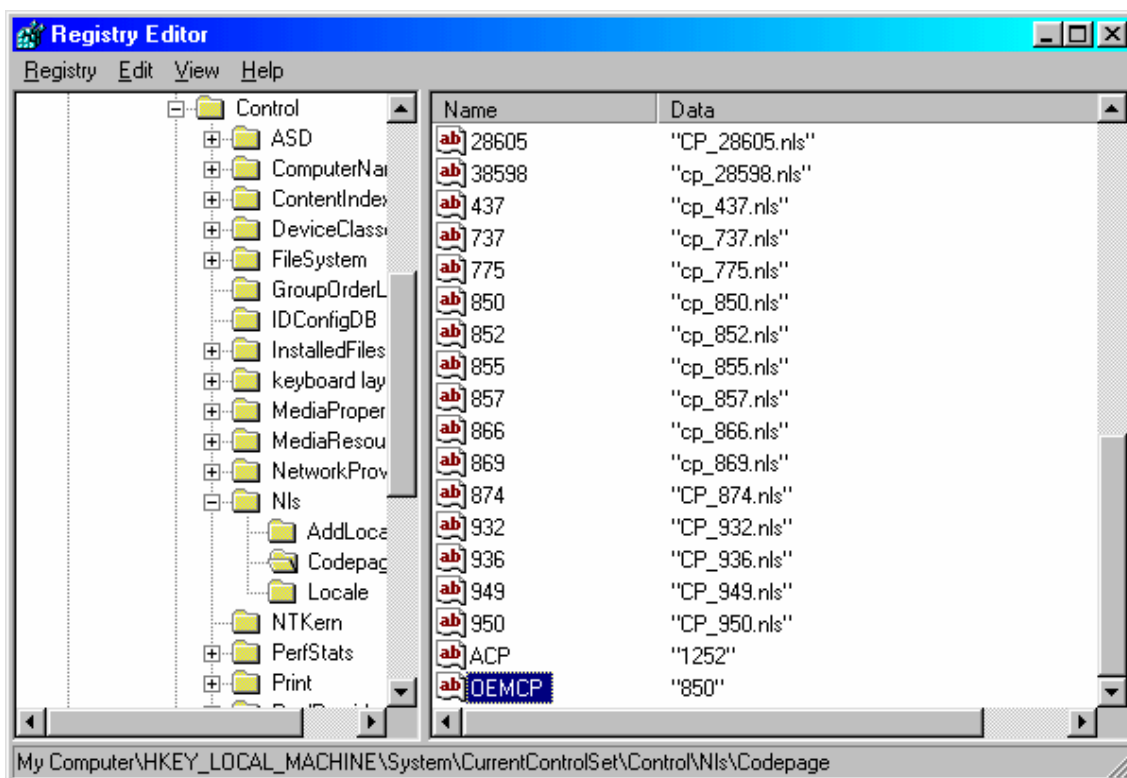
Windows will ask you whether you want to reboot at this stage. Say No and proceed with the next step.

CHANGE THE WINDOWS DEFAULT CODE PAGE TO 850

- Click on the Windows **Start** button.
- Click on **Run**.
- Type **Regedit** in the space provided.



- Follow the path below, open the file OEMCP and type 850.



- Close the Windows Registry.

Once this has been done, reboot the computer. Load the CCS System and check that the system is using the Portuguese language file correctly.