

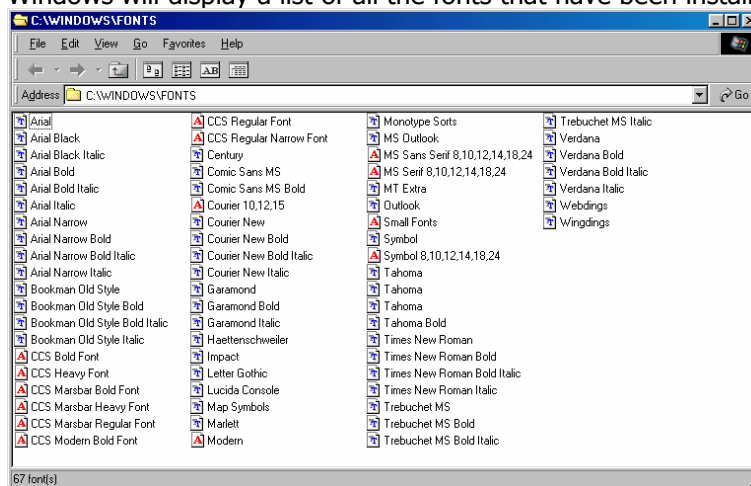
INSTALLING FONTS IN WINDOWS

Title	Installing fonts in Windows
Category	WINDOWS
Document Number	TN0016
Software version	Not applicable
Application	SYSTEM
Create Date	20 July 2003
Revision Date	21 July 2003
Document Version	Final
Author	Dale Anderson
Support	support@ccssa.com

Sometimes it is necessary to install additional fonts on your computer. This document explains how to copy a Windows font file from a floppy disk and onto your computer.

- Click on the Windows **Start** button.
- Click on **Settings** and then **Control Panel**.
- Double click on **Fonts**.

Windows will display a list of all the fonts that have been installed on your computer.



- Click on the **File** Menu.
 - Click on **Install Font File**.
- Windows will display the Install Fonts dialog.
- Select **A:** in the Drives list box.
 - Click on **Select All** to select all the fonts.
 - Click on **OK**.

Windows will copy all of the fonts onto your computer. Check the Fonts folder to make certain you can see the fonts that you have installed.