

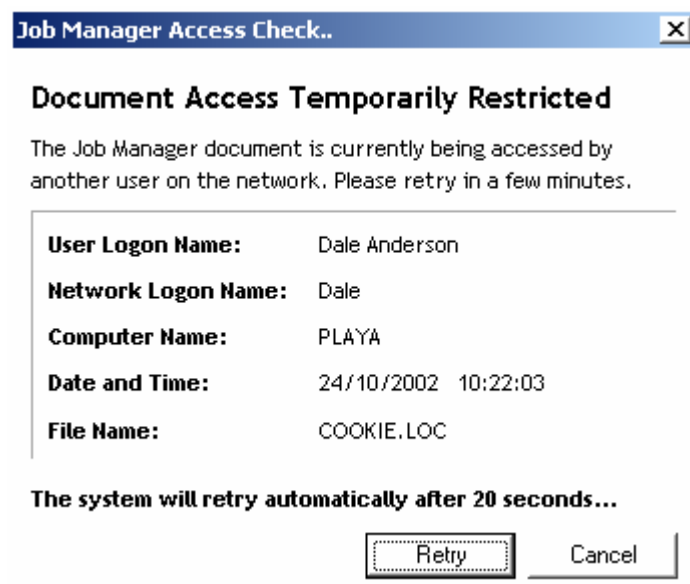
## SHARING THE SAME CCS DATA FOLDER

Title	Sharing the same CCS data folder
Category	SYSTEM
Document Number	TN0027
Software version	All versions
Application	Setup
Create Date	19 July 2003
Revision Date	21 July 2003
Document Version	Provisional
Author	Dale Anderson
Support	support@ccssa.com

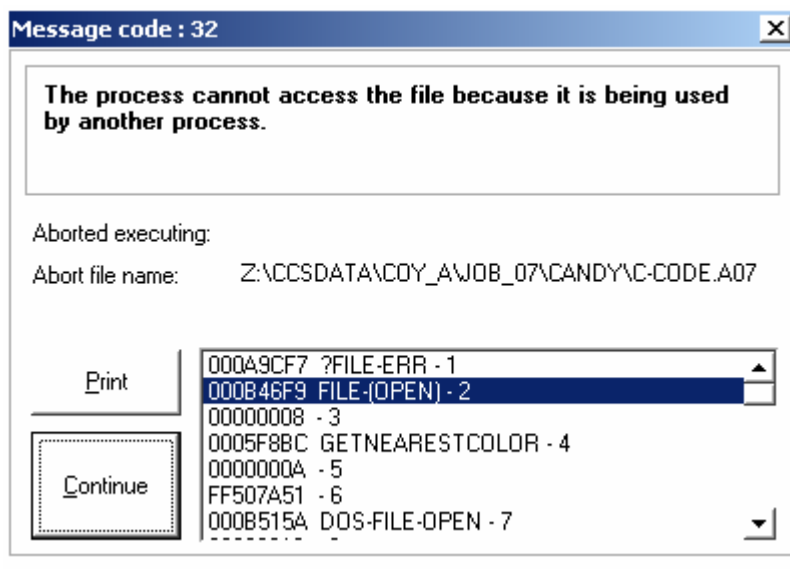
### SYMPTOMS

When trying to access the Company & Job manager, users get the error message:

Job Manager Access Check



or the error:  
Message code : 32



## CAUSE

This problem is caused by the users sharing the same data area.

If a user tries to access the Company & Job manager whilst another user is viewing it, CCS will display the **Job Manager Access Check** error message. This informs the user of the person currently accessing the Company & Job Manager.

If a user tries to access a Candy Job or SitePlan program whilst another user is accessing that job or program, CCS will display the **Message Code : 32** error.

## SOLUTION

Do not remain on the Company & Job manager for longer than is necessary, as this will prevent other users from having access to this area.

Switch on the screen saver to a reasonably short period of time. When the screen saver activates, CCS closes all data folders and returns the user to a menu. This will allow other users access to that job.

Each user must by agreement operate in the jobs allocated to him at a given time slot.

It is better to put CANDY masters in the network masters company and restrict the access to the master jobs to controller staff only. Normal users can then open multiple read only sessions to the master jobs without effecting access for other users