

## EXPORTING A SITEPLAN PROGRAM TO MPX

Title	Exporting a SitePlan program to MPX
Category	IMPORT EXPORT
Document Number	TN0028
Software version	1.06
Application	SITEPLAN
Create Date	17 July 2003
Revision Date	23 July 2003
Document Version	Final
Author	Louis Reynolds
Support	siteplan@ccssa.com

## INTRODUCTION

### MPX?

MPX stands for MS Project export format. An MPX file must be a comma delimited text file with a ".MPX" extension. MPX is a convenient method of exporting program information to MSProject and SureTrak.

### Logic differences between SitePlan and MS Project

A Start Lead in MSProject is the number of **days** from the start of a predecessor to the start of the successor. A Start Lead in SitePlan is the number of **days of work done** in the predecessor before the successor can start. This will cause differences in results when there is progress out of sequence. The same applies to End Lags.

### General differences between SitePlan and MS Project

Exporting to MS Project is best used to export a contract program without resources or progress.

MS project does not allow double links between activities i.e. Start-to-start, end-to-end links.

Progress is very different between the two programs. This export is intended for export of base programs without progress.

Resource codes can be exported, but this is not recommended because MS Project will change activity durations according to resource details.

The header level numbers that SitePlan uses to describe the hierarchical structure of the program will be imported into MS Project as indent levels. NOTE: Activities must only be added below the lowest level of each family for this structure to be translated correctly. ALSO NOTE that if the lowest header activity in each family is not followed by an activity, it will become an activity.

### Differences between SitePlan and SureTrak

Exporting to SureTrak is best used to export a base program as the MPX format is designed to handle progress the way MSProject handles it.

Resources will not affect the program calculation in SureTrak. However, quantities will be incorrect.

### Problems with MPX and SureTrak/P3

P3 can import MPX files, but there is no outline level so activities will appear in the incorrect order.

Some versions of SureTrak and P3 convert all durations and offsets into hours. CCS has no way of controlling this. There are, however, patches available on the Primavera website that will fix this problem.

## Problems with PS7

MPX files from PS7 do not seem to conform to MPX requirements.

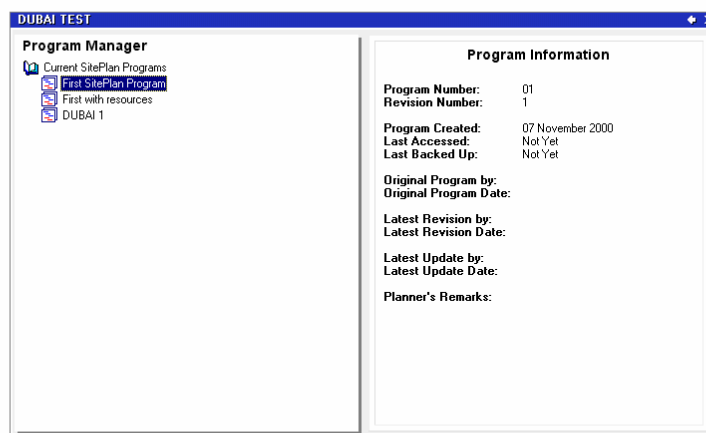
## Disclaimer

Due to differences in calculation and the activity types between products the responsibility for validating the results must lie with those providing the export file and those doing the import into SitePlan.

## Problems

Email the file that is being imported to [siteplan@ccssa.com](mailto:siteplan@ccssa.com). Include your name, company, phone number (international format), version of CCS, version of the product that created the file and any special information i.e. the file has been exported on a non-English machine. Method

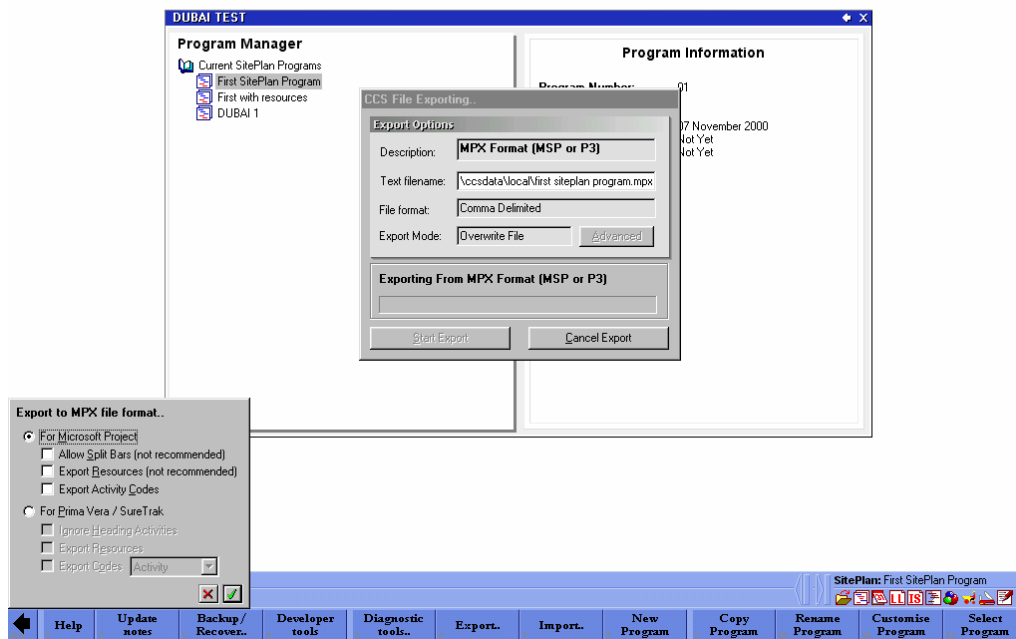
Put the cursor on the program that is to be exported and hit the EXPORT softkey.



Choose EXPORT TO MPX file from the popup menu.

Type in the name of the export file (a path i.e. A:\ can also be added).

Hit the START EXPORT button.



Choose MS Project or P3/SureTrak from the dialog. Leave the other defaults as is.

If the export is successful, SitePlan will attempt to open the folder that the file was exported to.

The resulting file can be opened using an appropriate package like MSProject.

## What Goes Where?

SitePlan Activity Number - TEXT1 field.

SitePlan Codes – TEXT2 through TEXT6 fields (only if exported).

SitePlan Header Structure – In MS Project and in SureTrak this is handled by normal outlining. In P3 the highest summary activity's code is found in TEXT2, the lowest in TEXT6 (if Automatic Coding was chosen).

Note that P3 and SureTrak do not import activity ids. They must be copied from the TEXT1 column using global change in P3 i.e. "Then: ACT EQ Txt1" or cut&past columns in SureTrak. MS Project does not have a text activity id.

## Special uses: Merging Programs in MS Project

MS Project allows MPX files to be re-imported. It will attempt to keep changes made in MS Project and import new changes i.e. new activities, change of the outline structure, changes to descriptions. This will work even if the activity list has been renumbered in SitePlan.