

EXPORTING TO PRIMAVERA (BATCH FILE)

Title	Exporting to Primavera (Batch file)
Category	IMPORT EXPORT
Document Number	TN0029
Software version	1.06
Application	SITEPLAN
Create Date	17 July 2003
Revision Date	21 July 2003
Document Version	Provisional
Author	Louis Reynolds
Support	siteplan@ccssa.com

INTRODUCTION

Primavera batch import/export

The Primavera Batch system creates or updates Primavera databases from a text file. This is done using a Primavera tool called PRMBATCH.EXE.

This is documented by Primavera in P330batch.pdf and is installed with every Primavera installation. Note that this is not available for SureTrak users.

Logic differences between SitePlan and P3

A Start Lead in P3 is the number of **days** from the start of a predecessor to the start of the successor.

A Start Lead in SitePlan is the number of **days of work done** in the predecessor before the successor can start.

This will cause differences in results when there is progress out of sequence. The same applies to End Lags.

What gets exported?

- Program:
 - Start date and time now date
 - Multiple calendars with holiday/workday exceptions
 - Summary headers as a work breakdown structure
- Activity:
 - Descriptions
 - Start and end dates
 - Precedence Logic
 - Special types i.e. H-type, Start B-types as starts, F types
 - Time now and actual dates (progress)
- Resources:
 - Definitions of Total and Daily types (pool type becomes total)
 - Allocation to activities with a quantity

What does not get exported?

- Activity:
 - Remarks, notes and calculation sheets
 - Base program and snapshots
 - Special types i.e. T types
 - Codes i.e. zone, area
-

Header structure as a code structure

- Resources:
 - Candy links
 - Pool type resources
 - Cost loading
 - Resource offsets

Disclaimer

Due to differences in calculation and the activity types between products the responsibility for validating the results must lie with those providing the export file and those doing the import into SitePlan.

Problems

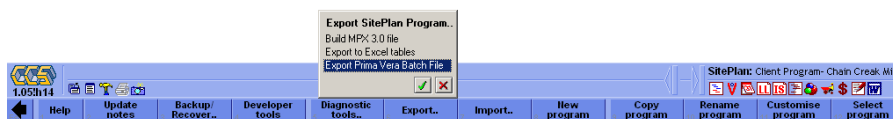
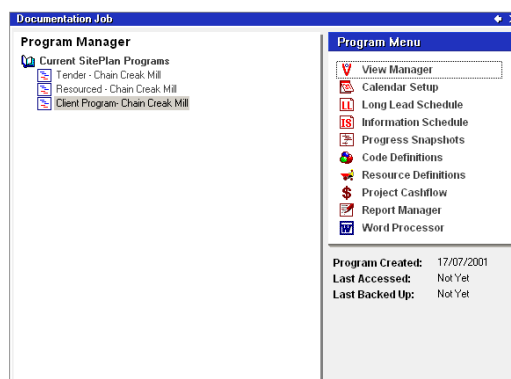
Email the file that is being imported/exported to siteplan@ccssa.com. Include your name, company, phone number (international format), version of CCS, version of the product that is attempting to open the file and any special information i.e. the file has been exported on a non-English machine.

If you are not a client of CCS then specify what company the file originated from and a contact there.

METHOD

Step 1: In SitePlan

Put the cursor on the program that is to be exported and hit the EXPORT softkey.



Choose CREATE A PRIMAVERA BATCH FILE from the popup menu.

Enter a name for the export file or leave as default.

Answer any questions as they are asked.

Wait for the operation to complete.

Step 2: Using PRMBATCH.EXE

The following must be done on the machine that is going to import the transaction file. It must have P3 correctly installed.

The operator should know where P3 is installed. The following documentation will assume that P3 is installed in C:\P3WIN.

Copy the file that SitePlan produced to C:\P3WIN\P3OUT. Make sure it has an .OUT extension.

Edit the file by double clicking on it. This will run a text editor called P3LOOK.EXE.

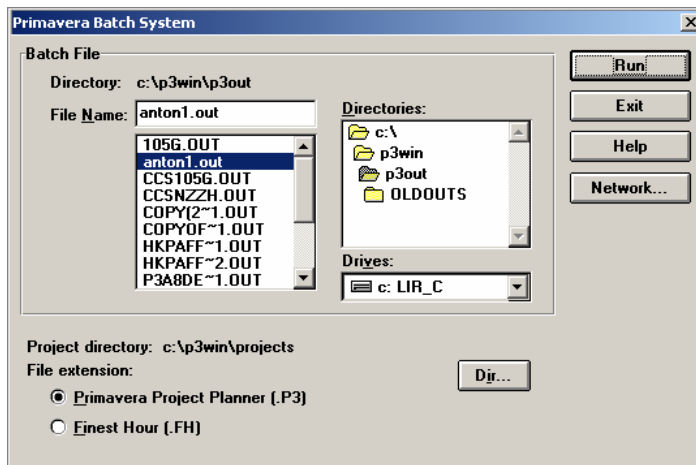
Replace !!!!!!! on line 20 with the logon name used to log into P3. Usually the login name of the computer will work – see the section on error messages below.

Exit P3LOOK.EXE – the file will be saved.

Make sure that there is no P3 project named CCS1. Alternatively use P3LOOK.EXE to replace ALL occurrences of CCS1 in the text file with a unique four-character project name.

Make sure P3 is not running in the background.

Run C:\P3WIN\P3PROGS\PRMBATCH.EXE.



Use the browse button to locate the SitePlan text file.

Hit RUN. This will create a P3 project.

Step 3: In Primavera

Run P3 and open the project (should be called CCS1 unless changed).

Organise by WBS.

Schedule (otherwise you will see no bars).

Possible errors that PRMBATCH might report

“Unable to ADD Project CCS1”. This usually indicates that the user name (the replaced !!!!!!!) is incorrect.

P3 has a utility called NetSet. Run it from C:\P3WIN\P3PROGS\P3NET.EXE and use the password “netset” to get into it. You can get a list of registered users by selecting “Options>Show current users”. This will give a list of registered users for this P3 installation. Use one of these to replace !!!!!!!.

“ Project CC1 already exists”. Delete or remove this project from the project directory. This is usually c:\p3win\projects – this can be confirmed by looking at ‘project directory’ on the batch system dialog.

Most other errors are directed to a file called c:\p3out\p3.out.