

Reports: Time Location Tips (Draft Notes)

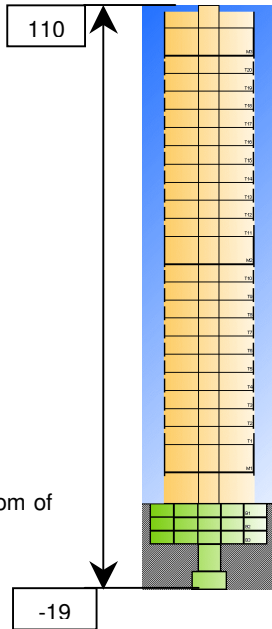
Creating a bitmap / emf picture for the Time Location Report

The bitmap or emf picture to be included in the Time/Location report should be a section through a building, mineshaft, pipeline or railway line.

The picture should be to scale and without any borders. This is to ensure that the location scale prints correctly. (See following sample explanations)

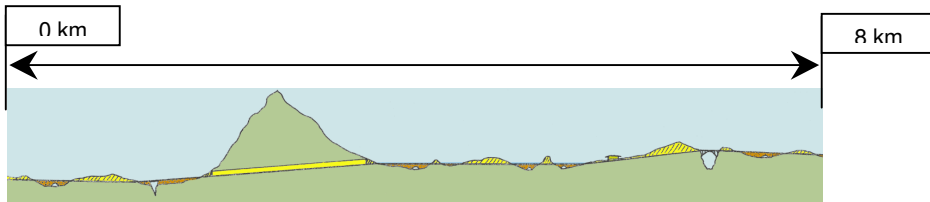
The system will allocate the scale as defined in the Time location definition dialogue (using the highest and lowest values defined in the dialogue)

Level/Loc Code	Description
-19.000	Base
-15.000	Core
-9.000	B3
-6.000	B2
-3.000	B1
0.000	GF
7.000	M1
13.000	T1
17.000	T2
95.000	T20
99.000	M3
105.000	LMR
110.000	Roof



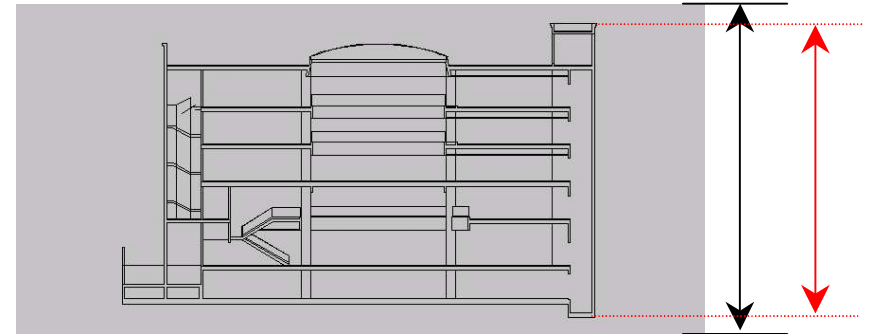
In the above example “-19.000” will be allocated to the bottom of the bitmap picture and “110.000” to the top.

The same will apply for a Time Location report with a picture on the horizontal axis



“Adjusting” the picture for correct scaling allocation.

In some cases the picture need to be “adjusted” to ensure the scale is allocated correctly on the location axis against the picture



In the above example the borders on the top and bottom of the picture should be taken into account when using this picture.

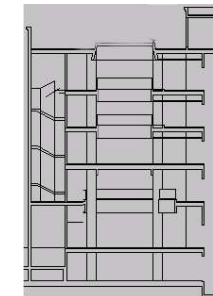
This can be done in two ways –

- Use a graphics software package to remove the top and bottom borders and then use this adjusted picture in the report.
- Include the outer edge of the borders when defining the Time location in the definitions dialogue.

Another point to keep in mind when using pictures with the Time Location report is the size.

- For a high-rise type report – the width of the picture should not be more than the height; otherwise the picture will dominate the report.
- Vice versa for a rail track type report – the height of the picture should not be more than the width; otherwise the picture will dominate the report.

A ‘thinner’ picture can be made using cut and paste with a graphics software package.



Using Excel and Paint to create a picture for a Time Location report.

A simplistic picture can also be drawn using **Excel** and **Paint**.

When drawing the picture in **Excel** the scale can be adjusted using the row height.

In the example picture the row height were “pro-rata” to the height between floors.

The row height of 10 points per meter was used i.e. for a height of 3 meters between floors the row height of 30 points was used.

When the picture is complete, switch off the background gridlines. (Use the **Excel** menu tabs – “Tools”, “Options” and “View”.)

Select the picture and copy it to the Windows clipboard.

Open **Paint** and paste the picture from the clipboard into **Paint**.

Adjust the size of the picture in **Paint** to minimize any borders that there might be; if necessary.

Save the picture as a bitmap (*.bmp) file

To use this picture in a Time Location report save the picture where the CCS data is stored under the folder “Local”

