

## 16 BIT ERRORS IN WISE SETUP

Title	16 bit Errors in Wise Setup
Category	Install
Document Number	TN0056
Software version	1.08
Application	SYSTEM
Create Date	10 August 2004
Revision Date	05 May 2005
Document Version	Final
Author	Louis Reynolds
Support	<a href="mailto:louis.reynolds@ccssa.com">louis.reynolds@ccssa.com</a>

### INTRODUCTION

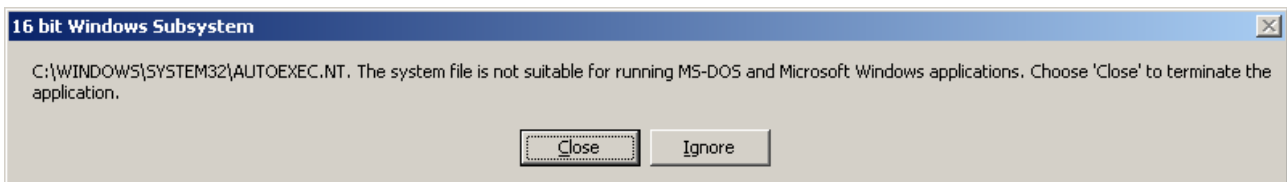
This problem came up on Windows 2000\XP. The install program CCS was using, was old and could cause problems if these operating systems were not set up correctly.

Since CCS version 1.08d33 this problem was fixed by upgrading the install software.

However, for some unknown reason specific versions of XP still have the problem.

### PROBLEM

Running SETUP.EXE does nothing except produce the following error:



### SOLUTION 1

Generally a copy of AUTOEXEC.NT can be found at the following path:

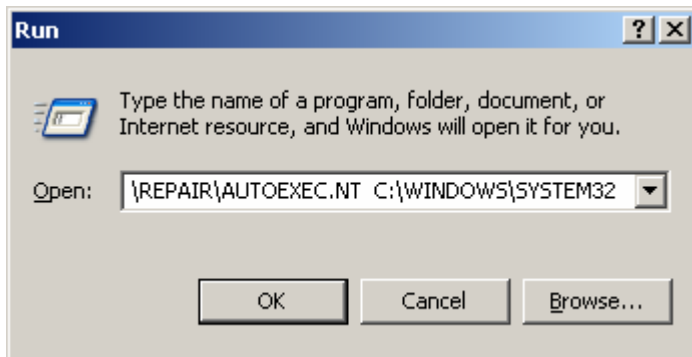
C:\WINDOWS\REPAIR

It can be copied to the following path:

C:\WINDOWS\SYSTEM32

To do this quickly, use the Windows START button and choose RUN. Type the following into the box provided (if possible copy and paste from this document). Hit OK.

```
XCOPY C:\WINDOWS\REPAIR\AUTOEXEC.NT C:\WINDOWS\SYSTEM32
```



The Administrator may have to log in before doing this.

## SOLUTION 2

Use NOTEPAD to create a file called AUTOEXEC.NT at the following path:

```
C:\WINDOWS\SYSTEM32
```

It should contain the line:

```
LH %systemroot%\system32\dosx
```

The Administrator may have to log in before making changes to this file or folder.